

Core Flex

Assembly Instructions

Tools Required:

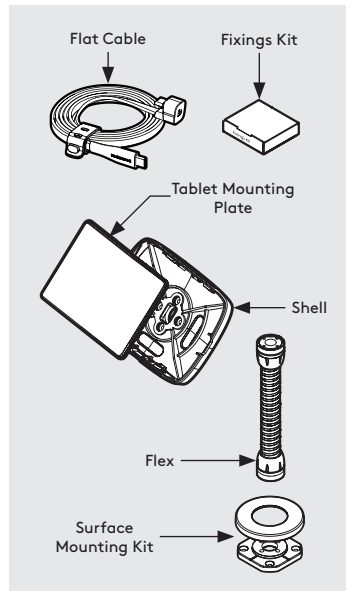
- Pencil
- Electric Drill
- 7mm Spanner **or adjustable spanner*
- 5.0mm Drillbit **if fixing from below*
- 2.5mm Drillbit **if fixing from above*
- 16mm Holesaw **if routing the tablet cable through your mounting surface*
- Socket Driver

Sheet Code: BP-IM-082_REVO

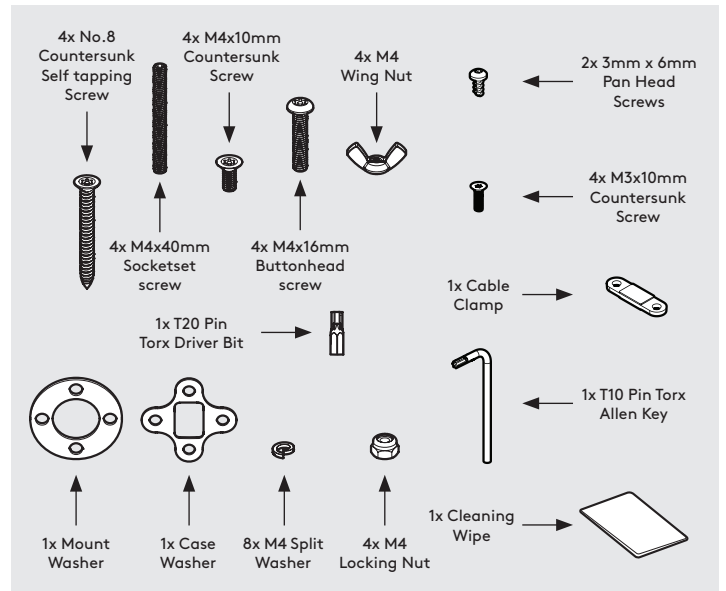
Release Date: 13/08/2024

Copyright 2024 Spotspot Ltd. (T/A Bouncepad) all rights reserved.

Confidential, no part of this publication may be reproduced or transmitted in any form without the written permission of the copyright holder.

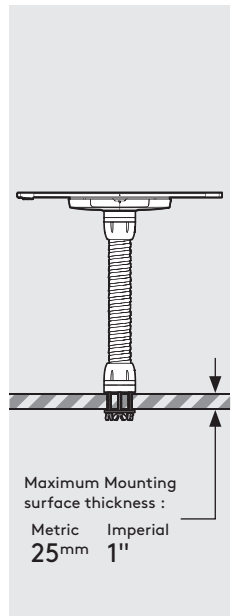


In the Box

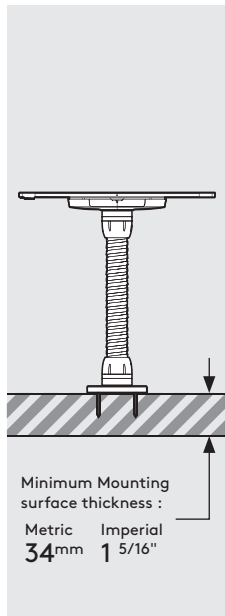


Fixings List

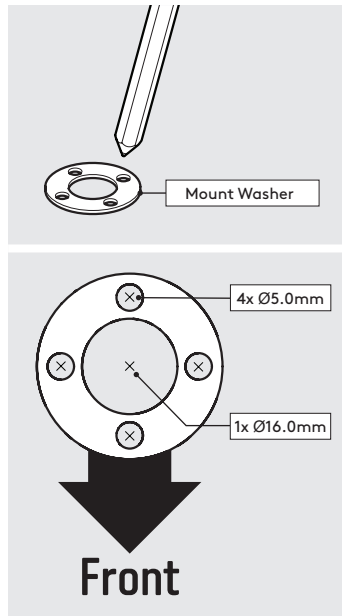
** Due to the modular nature of our product range you may receive additional fixings in the fixings kit*



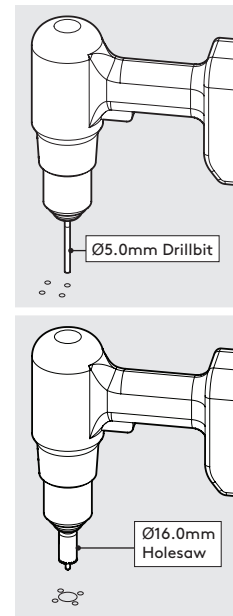
Maximum Mounting surface thickness :
Metric 25mm
Imperial 1"



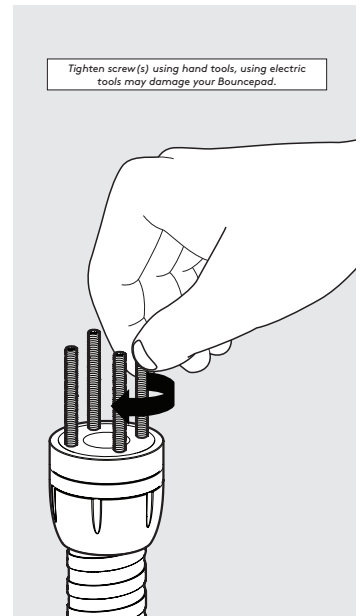
Minimum Mounting surface thickness :
Metric 34mm
Imperial 1 5/16"



Front



Tighten screw(s) using hand tools, using electric tools may damage your Bouncepad.



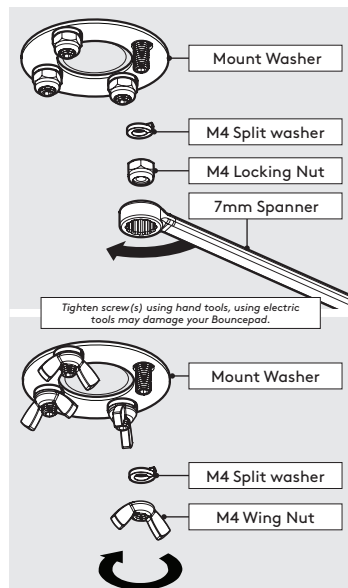
A Follow steps A if "Fixing from below".

B Follow steps B if "Fixing from Above".

A1 Using the Mount washer, mark the drill hole locations.

A2 Drill each hole - using the specified drill.

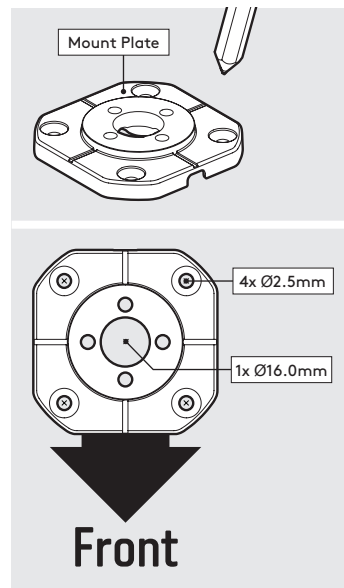
A3 Locate & screw the Socket screws into the Desk as shown



A4 Secure the arm to the surface. Locking Nuts offer higher security.

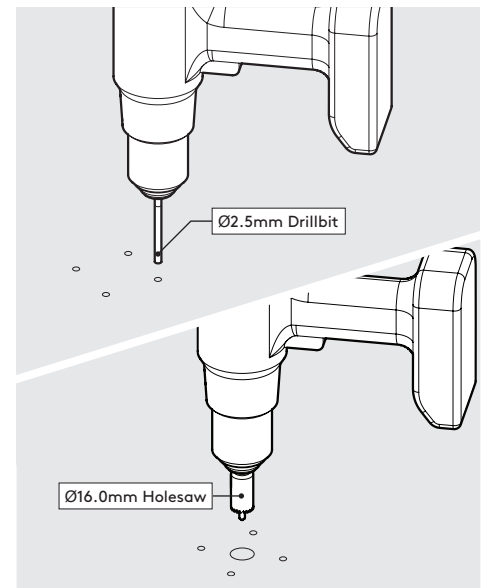


A5 Go to step 1.

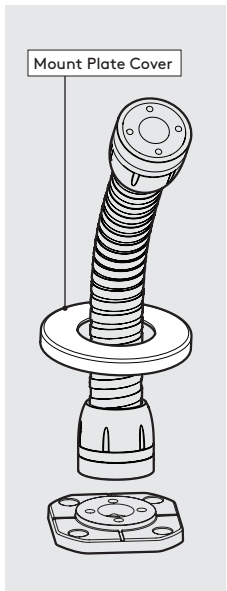


Front

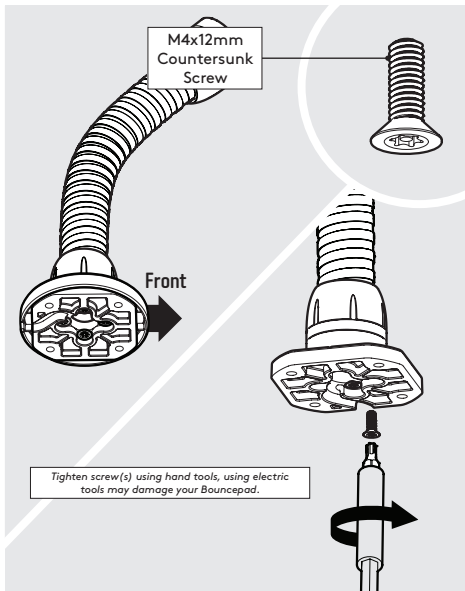
B1 Using the Mount Plate, mark the drill hole locations as shown.



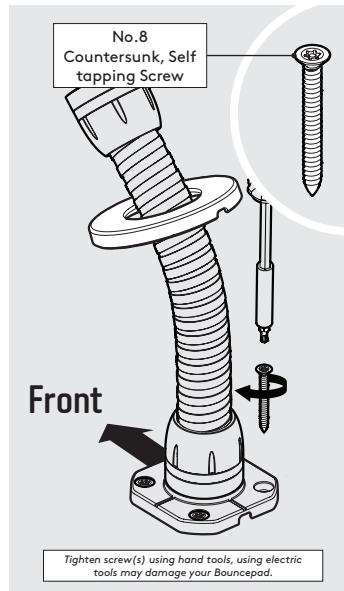
B2 Drill each hole - using the specified drill sizes.



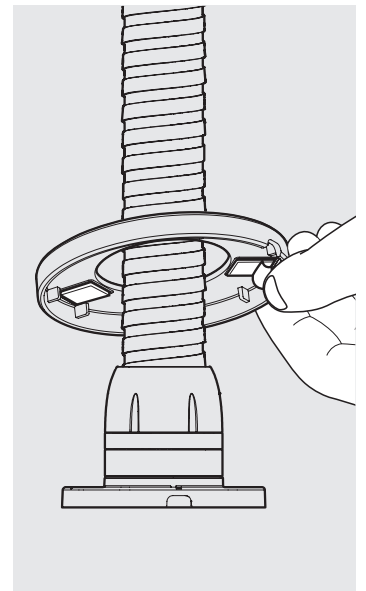
B3 Locate the Cover onto the Flex.



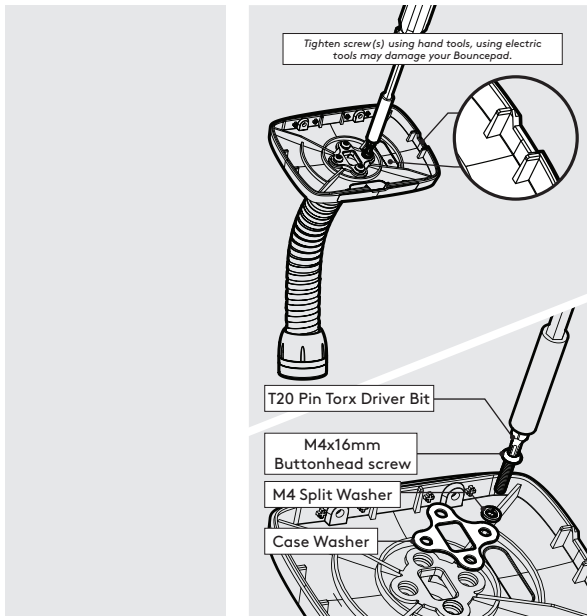
B4 Join the Flex Arm & Mount Plate in the orientation shown.



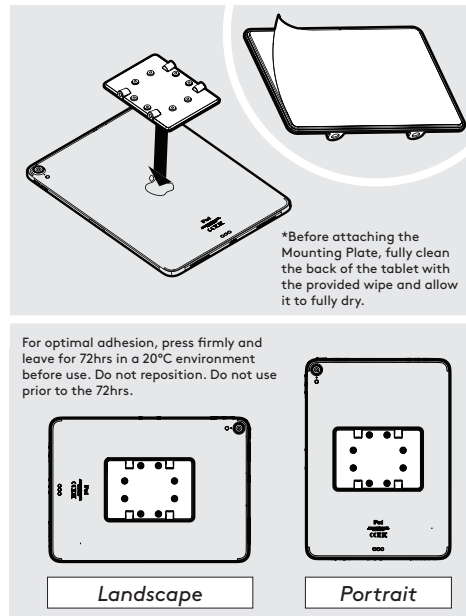
B5 Secure the Flex to the surface with the 4x countersunk fixings.



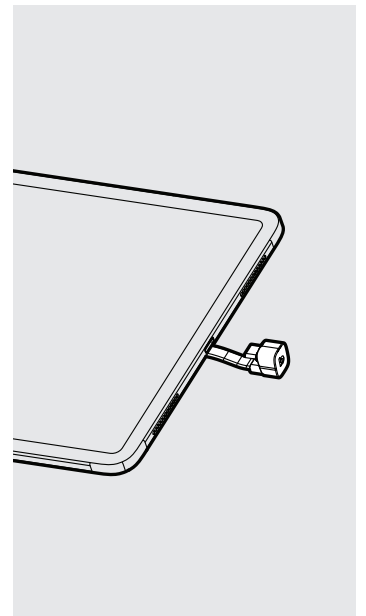
B6 Adhere the Mount Cover onto the Mount Plate with the adhesive tabs.



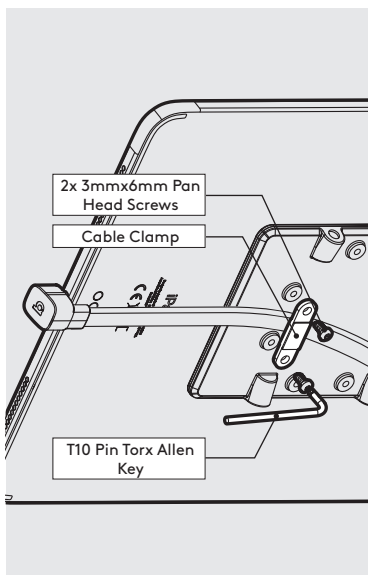
B7 Go to step 1.



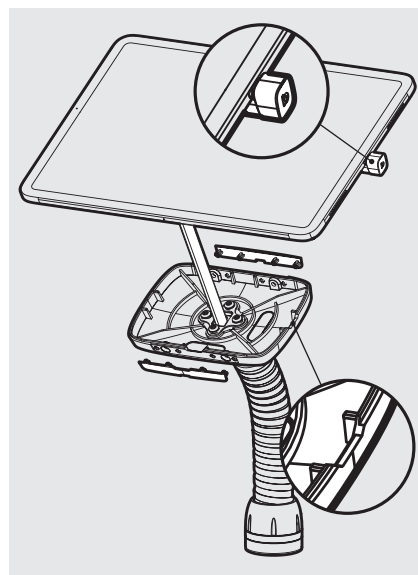
2 Remove the Mounting Plate adhesive backing. Attach level & centrally to the Tablet back as shown.



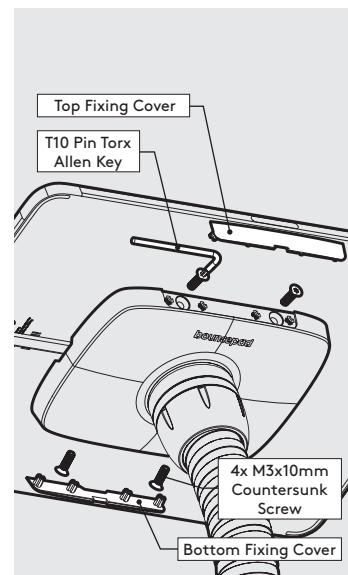
3 Attach the Flat Cable to the Tablet with the U-Bend Head.



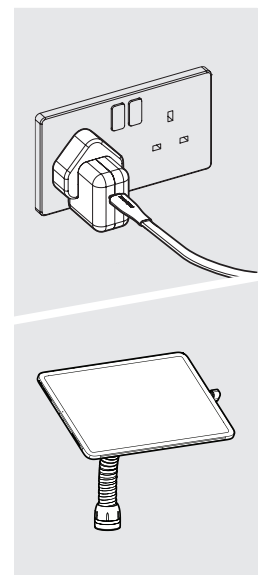
4 Secure the Flat Cable to the Mounting Plate with the Cable Clamp as shown.



5 Remove the Fixing Covers. Feed the Flat Cable into the assembly & locate the Tablet in the chosen orientation.



6 Secure the Tablet to the Shell & attach the Fixing Covers as shown.



7 Connect tablet to power & installation is now complete.